

On redrawn on 1852 Map

Location of Lilly Weston
house on 1905 transfer
of property from
Loretta Gaut to August
& Mary Trudel

August + Mary Trudel.

2-7-05 fr Loretta Gaut.

Note: This deed describes a part of
O.L. 34 + 44 and calls it $46\frac{1}{2}$ acres,
but excepts 35a. in O.L. 44, leaving $10\frac{50}{100}$ A.
conveyed, all in Lot 34.

S 2° 27' W

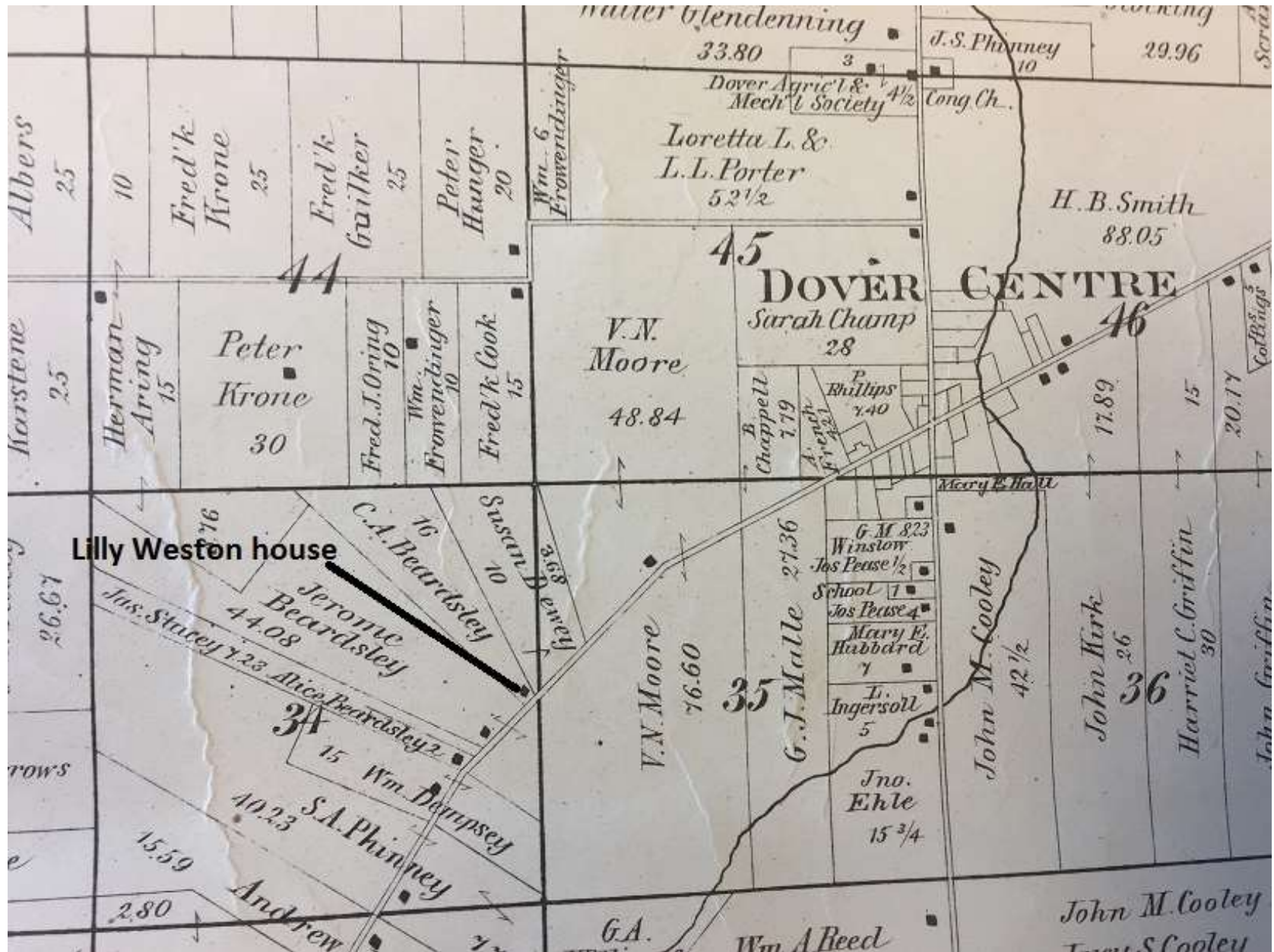
12.49c

17.75c

N 90° W

674' 2"

1892



1905

Location of Lilly Weston
house on 1905 transfer
of property from
Loretta Gaut to August
& Mary Trudel

August + Mary Trudel.

2-7-05 fr Loretta Gaut.

Note: This deed describes a part of
O.L. 34 + 44 and calls it $46\frac{1}{2}$ acres,
but excepts 35a. in O.L. 44, leaving $10\frac{50}{100}$ A.
conveyed, all in Lot 34.

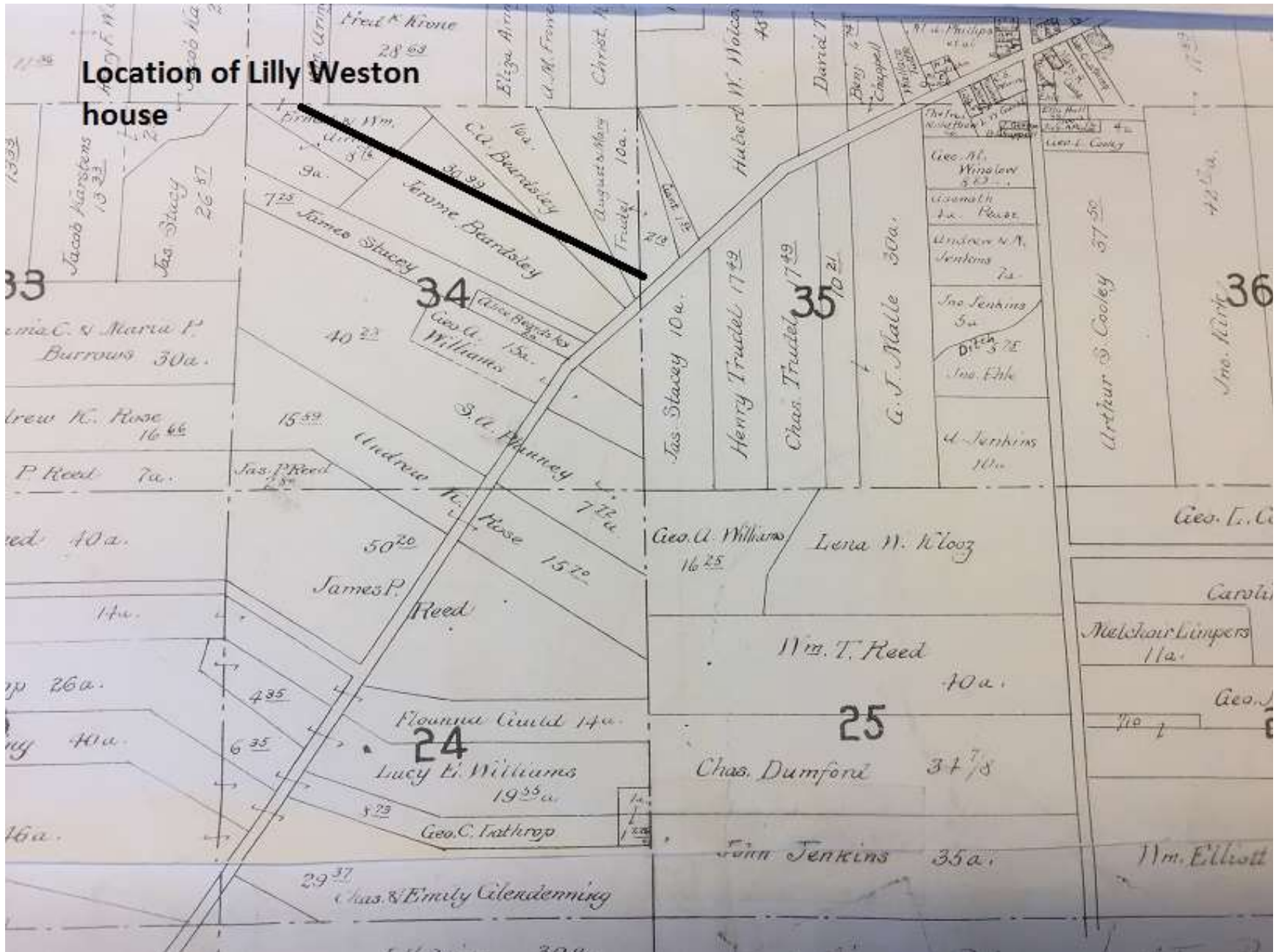
S 2° 27' W
12.49c

17.75c
N 90° W

6.50c

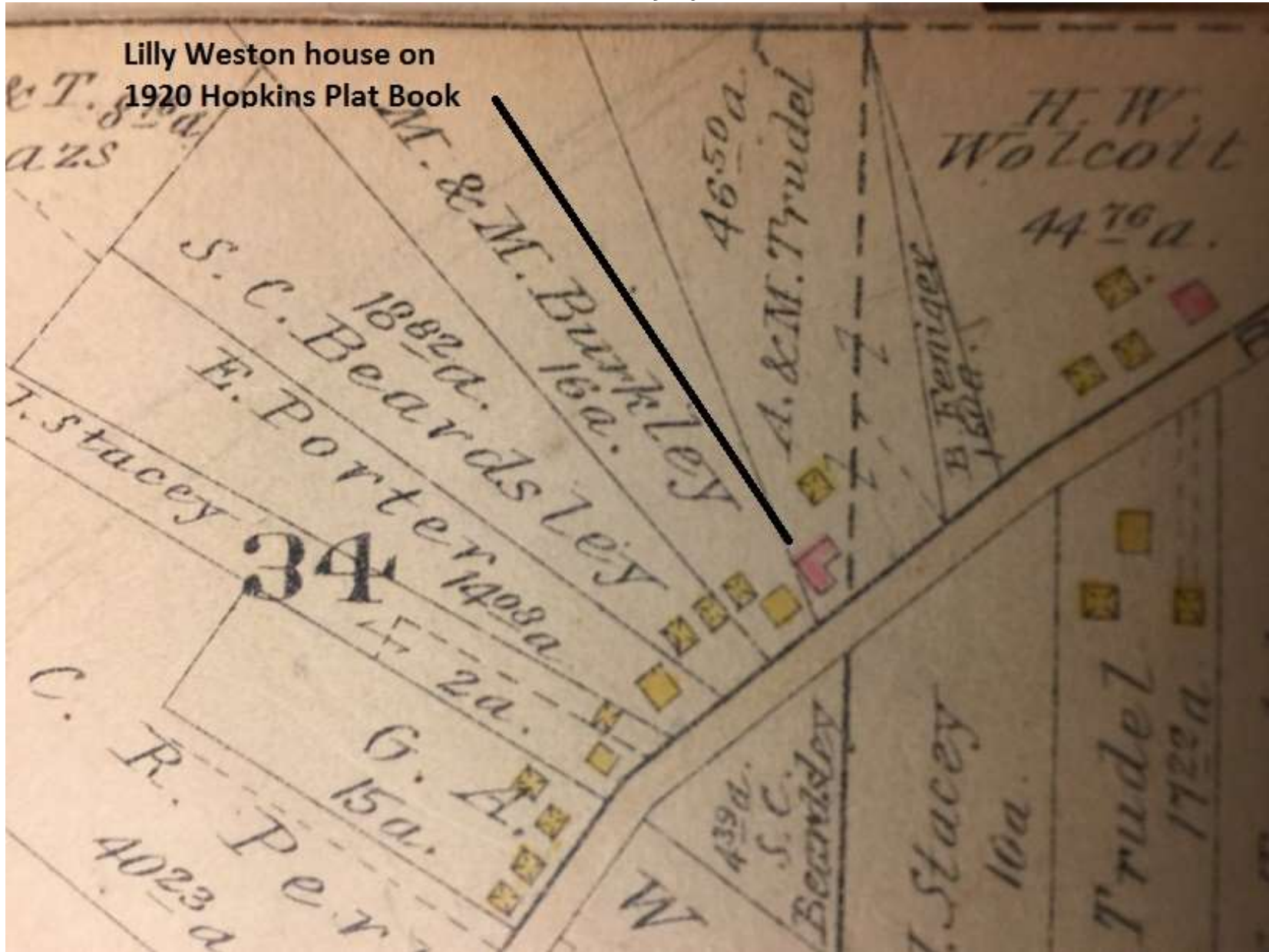
674'2"

1909



1920

Lilly Weston house on
1920 Hopkins Plat Book



1987

